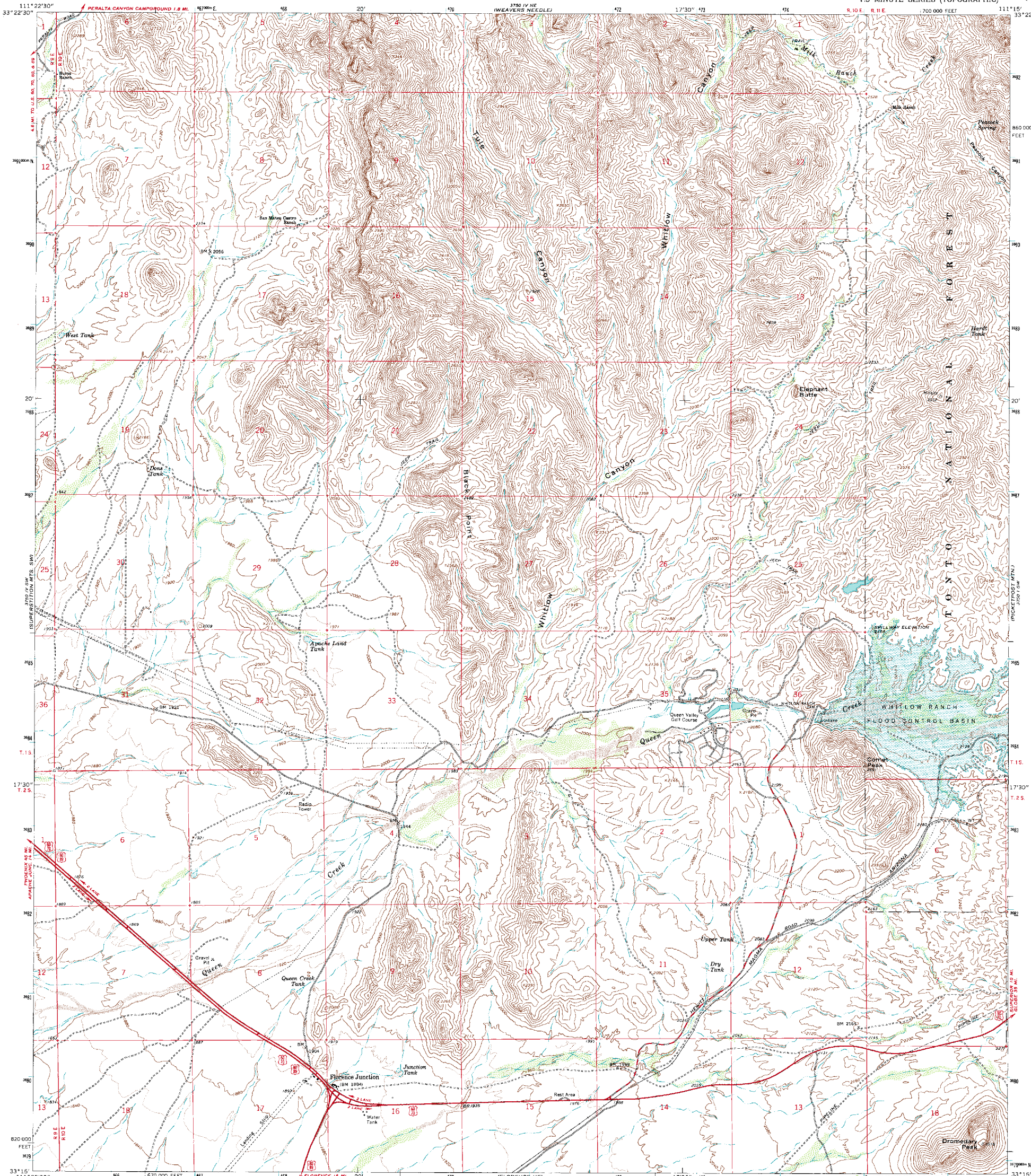


3750 IV NE  
 33°22'30"  
 111°22'30"

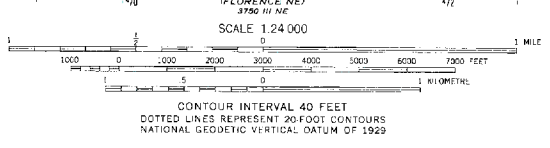
UNITED STATES  
 DEPARTMENT OF THE INTERIOR  
 GEOLOGICAL SURVEY

FLORENCE JUNCTION QUADRANGLE  
 ARIZONA-PINAL CO.  
 7.5 MINUTE SERIES (TOPOGRAPHIC)

3750 IV NE  
 33°22'30"



Mapped, edited, and published by the Geological Survey  
 Control by USGS and USC&GS  
 Topography by photogrammetric methods from aerial  
 photographs taken 1962. Field checked 1966  
 Polyconic projection. 1927 North American datum  
 10,000-foot grid based on Arizona coordinate system, central zone  
 1000-metre Universal Transverse Mercator grid ticks,  
 zone 12, shown in blue  
 Where omitted, land lines have not been established  
 Areas covered by dashed light-blue pattern  
 are subject to controlled inundation



FLORENCE JUNCTION, ARIZ.  
 N3315-W11115/7.5

1966

AMS 3750 IV SE—SERIES V688